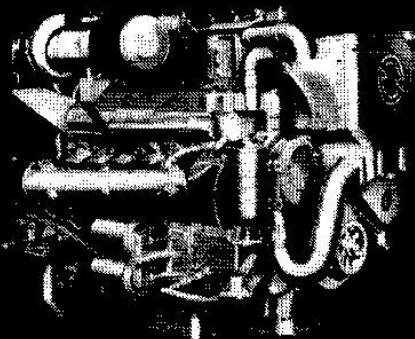


Detroit Diesel Engines marine models

12V-71
500 hp

12V-71TI
750 hp
*Twin Disc MG514CHP
Marine Gear*

12V-71TI
870 hp
*ZF BW 195
Marine Gear*



Typical 12V-71TI
Marine Model

basic specifications

Basic Engine	12V-71	12V-71TI <i>Twin Disc MG514CHP Marine Gear</i>	12V-71TI <i>ZF BW 195 Marine Gear</i>
Model-Port	7122-3000, 7122-3001**	7122-3300 [▲] , 3302	—
Starboard	7122-7000, 7122-7001**	7122-7300 [▲] , 7302	7122-7303
Description	Naturally Aspirated	Turbocharged-Intercooled	Turbocharged-Intercooled
Number of Cylinders	12	12	12
Bore and Stroke	4.25 in x 5 in (108mm x 127mm)	4.25 in x 5 in (108mm x 127mm)	4.25 in x 5 in (108mm x 127mm)
Displacement	852 cu in (13.97 liters)	852 cu in (13.97 liters)	852 cu in (13.97 liters)
Compression Ratio	18.7 to 1	17 to 1	17 to 1
Net Weight (dry)	4925 lbs (2234 kg)	5200 lbs (2359 kg)	5000 lbs (2268 kg)

**Models 7122-3001 and 7122-7001 are designed specifically for workboat use. See continuous ratings for power specifications.

[▲]Models 7122-3300 and 7122-7300 are designed specifically for crewboat/intermittent use only and use the Twin Disc MG514 gear. See Twin Disc intermittent ratings for power specifications.

power specifications

Continuous			
Injectors	N55		
Rated Gross Power	359 BHP (268 kW) @ 1800 RPM*	No continuous rating is currently available for the 12V-71TI	No continuous rating is currently available for the 12V-71TI
Rated Net Power	340 SHP (254 kW) @ 1800 RPM*		
Intermittent			
Injectors	N65	N70	N70
Rated Gross Power	456 BHP (340 kW) @ 2100 RPM*	539 BHP (402 kW) @ 2100 RPM*	539 BHP (402 kW) @ 2100 RPM*
Rated Net Power	437 SHP (326 kW) @ 2100 RPM*	510 SHP (380 kW) @ 2100 RPM*	510 SHP (380 kW) @ 2100 RPM*
Maximum			
Injectors	N70	7N95	9215
Rated Gross Power	500 BHP (373 kW) @ 2300 RPM*	750 BHP (560 kW) @ 2300 RPM†	870 BHP (649 kW) @ 2300 RPM†
Rated Net Power	480 SHP (358 kW) @ 2300 RPM*	720 SHP (537 kW) @ 2300 RPM†	840 SHP (627 kW) @ 2300 RPM†

*Rating conditions of 85°F (29.4°C) and 29.00 in Hg (98.19 kPa) Barometer (Dry)

†Rating conditions of SAE: 77°F (25°C) and 29.31 in Hg (99 kPa) Barometer (Dry)

Values are derived from currently available data and are subject to change without notice.